

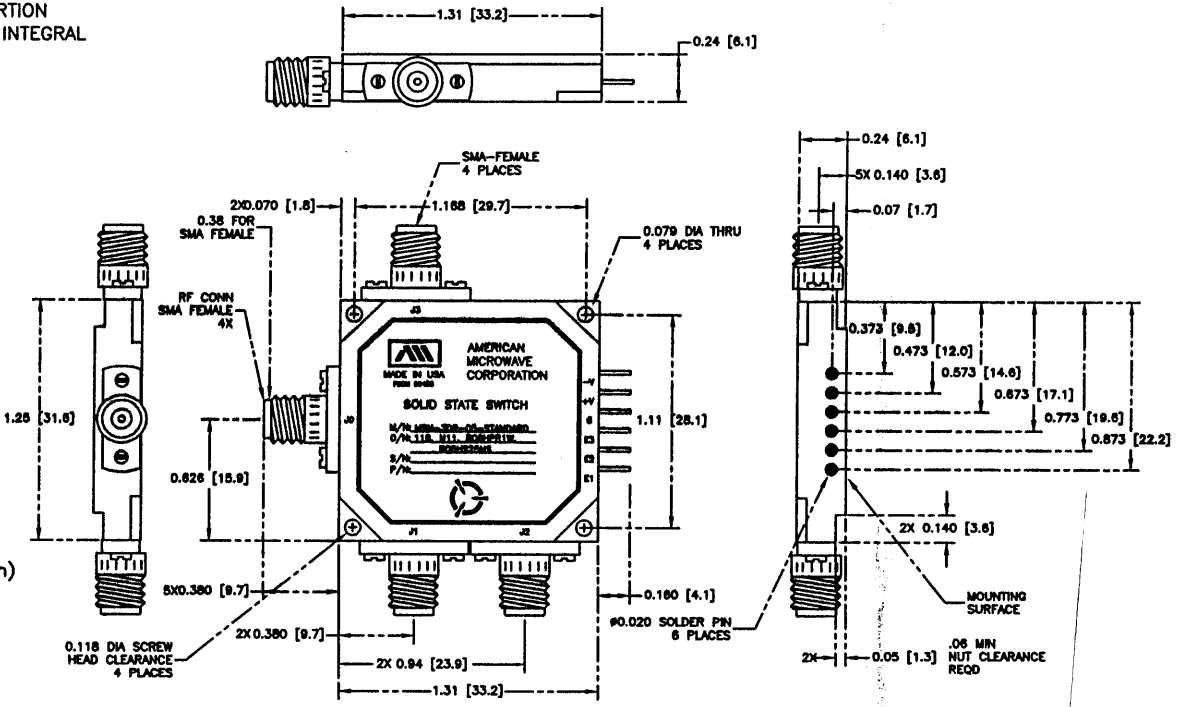
REVISIONS				
ZONE	REV.	DESCRIPTION	DATE	APPROVED
		ORIGINAL JOB# 001001-1	2/14/00	

DESCRIPTION:

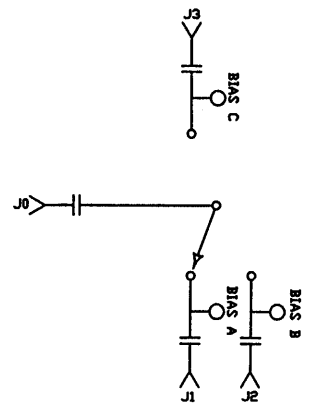
AMC MODEL MSN-3DR-05-STANDARD, OPTION 118, NI1, B06HPR1W, B05HS25NS IS A SINGLE POLE THREE THROW REFLECTIVE SWITCH MODULE, WITH VERY LOW INSERTION LOSS, HIGH ISOLATION, HIGH POWER (1 WATT) AND WITH HIGH SPEED (25 nS) INTEGRAL TTL DRIVER, DESIGNED FOR 1 GHz TO 18 GHz OPERATION.

SPECIFICATIONS:

- FREQUENCY: 1.0-18.0 GHz
- INSERTION LOSS: 1.2dB @ 1.0-4.0 GHz (MAXIMUM)
1.5dB @ 4.0-8.0 GHz (MAXIMUM)
2.0dB @ 8.0-12.4 GHz (MAXIMUM)
2.6dB @ 12.4-18 GHz (MAXIMUM)
- ISOLATION: 60dB @ 1.0-4.0, 4.0-8.0 GHz (MINIMUM)
60dB @ 8.0-12.4 GHz (MINIMUM)
50dB @ 12.4-18.0 GHz (MINIMUM)
- VSWR: 1.75:1 @ 1.0-4.0 GHz (MAXIMUM)
1.75:1 @ 4.0-8.0, 6.0-12.4 GHz (MAXIMUM)
2.0:1 @ 12.4-18.0 GHz (MAXIMUM)
- POWER HANDLING: REFLECTIVE 1 WATT CW OR PEAK (WITHOUT PERFORMANCE DEGRAGATION)
- SWITCHING SPEED: RISE TIME: 10nsec (MAXIMUM)
FALL TIME: 10nsec (MAXIMUM)
ON TIME: 25nsec (MAXIMUM)
OFF TIME: 20nsec (MAXIMUM)
- SURVIVAL POWER: 1 WATT AVG, 75 WATTS PEAK(1µsec max. pulse width)
- POWER SUPPLY: +5V ±5% @ 75 mA
-12V @ 20mA
- CONTROL INPUT IMPEDANCE: TTL ADVANCED, SCHOTTKY, ONE UNIT LOAD
- CONTROL LOGIC: "0"=ON @ -0.3V TO +0.8V
"1"=OFF @ +2.0V TO +5.0V
- CONNECTOR: SMA FEMALE
- SIZE 1.31 X 1.25 X 0.24
- WEIGHT 1.50 OUNCE TYPICAL



BLOCK DIAGRAM



ALL DIMENSIONS ARE IN INCHES
TOLERANCES:
X.XX ±0.020
X.XXX ±0.010

M/N=MODEL NUMBER
O/N=OPTION NUMBER
S/N=SERIAL NUMBER
P/N=PART NUMBER

NOTE:
DR=WITH DRIVER, REFLECTIVE
DT=WITH DRIVER, NON-REFLECTIVE/ABSORPTIVE

ENVIRONMENTAL RATINGS:

- TEMPERATURE: -65°C TO +85°C (OPERATING)
-65°C TO +125°C (STORAGE)
- HUMIDITY: MIL-STD-202F, METHOD 103B COND. B
- SHOCK: MIL-STD-202F, METHOD 213B COND. B
- VIBRATION: MIL-STD-202F, METHOD 204D COND. B
- ALTITUDE: MIL-STD-202F, METHOD 105C COND. B
- TEMPERATURE CYCLE: MIL-STD-202F, METHOD 107D COND. A

NOTE: THE ABOVE SPECIFICATIONS ARE SUBJECT TO CHANGE OR REVISION

PART NO.		AMERICAN MICROWAVE CORPORATION FREDERICK, MARYLAND		
APPROVALS	DATE	TITLE		
DRAWN	SRT	PRODUCT FEATURE MSN-3DR-05-STANDARD		
CHECKED	WDP 2/20/02	OPTION 118, NI1, B06HPR1W, B05HS25NS		
ISSUED		SIZE	FSCM NO.	DWG NO.
		A	60483	100-5273
SCALE				REV.
				SHEET 1 of 3